

Geneticists analyze prenatal genetic test results and may counsel pregnant women on available options. They may also conduct genetic research that leads to new drugs or foods, or perform DNA analyses for forensic investigations.

Lysosomes

In addition to their role as the digestive component and organelle-recycling facility of animal cells, lysosomes are part of the endomembrane system. Lysosomes also use their hydrolytic enzymes to destroy pathogens (disease-causing organisms) that might enter the cell. A good example of this occurs in macrophages, a group of white blood cells which are part of your body's immune system. In a process that scientists call phagocytosis or endocytosis, a section of the macrophage's plasma membrane invaginates (folds in) and engulfs a pathogen. The invaginated section, with the pathogen inside, then pinches itself off from the plasma membrane and becomes a vesicle. The vesicle fuses with a lysosome. The lysosome's hydrolytic enzymes then destroy the pathogen ([Figure 4.21](#)).

Phagocytosis

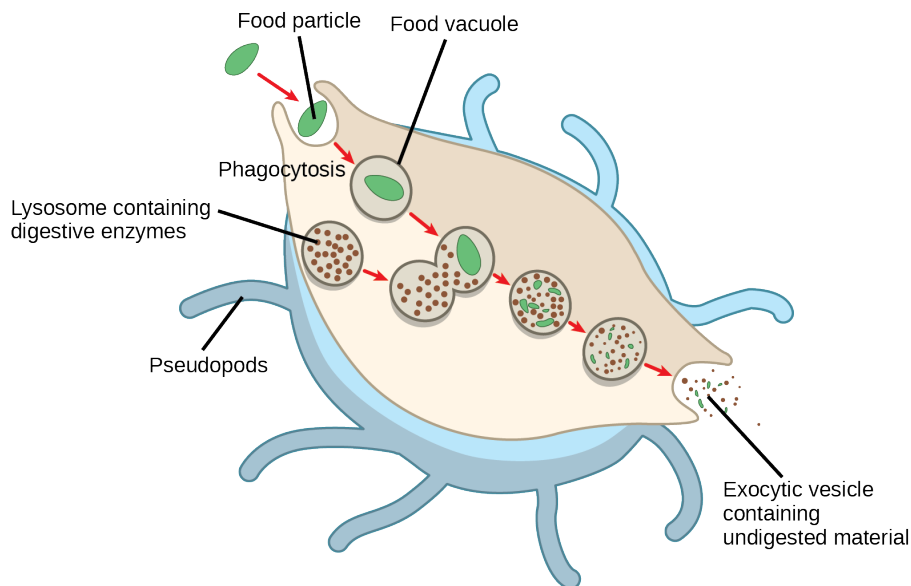


Figure 4.21 A macrophage has engulfed (phagocytized) a potentially pathogenic bacterium and then fuses with lysosomes within the cell to destroy the pathogen. Other organelles are present in the cell but for simplicity we do not show them.

4.5 The Cytoskeleton

By the end of this section, you will be able to do the following:

- Describe the cytoskeleton
- Compare the roles of microfilaments, intermediate filaments, and microtubules
- Compare and contrast cilia and flagella
- Summarize the differences among the components of prokaryotic cells, animal cells, and plant cells

If you were to remove all the organelles from a cell, would the plasma membrane and the cytoplasm be the only components left? No. Within the cytoplasm, there would still be ions and organic molecules, plus a network of protein fibers that help maintain the cell's shape, secure some organelles in specific positions, allow cytoplasm and vesicles to move within the cell, and enable cells within multicellular organisms to move. Collectively, scientists call this network of protein fibers the **cytoskeleton**. There are three types of fibers within the cytoskeleton: microfilaments, intermediate filaments, and microtubules ([Figure 4.22](#)). Here, we will examine each.

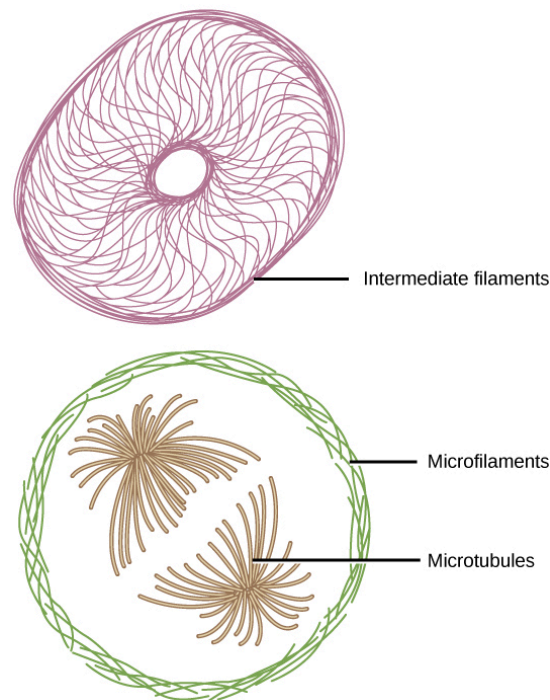


Figure 4.22 Microfilaments thicken the cortex around the cell's inner edge. Like rubber bands, they resist tension. There are microtubules in the cell's interior where they maintain their shape by resisting compressive forces. There are intermediate filaments throughout the cell that hold organelles in place.

Microfilaments

Of the three types of protein fibers in the cytoskeleton, **microfilaments** are the narrowest. They function in cellular movement, have a diameter of about 7 nm, and are comprised of two globular protein intertwined strands, which we call actin ([Figure 4.23](#)). For this reason, we also call microfilaments actin filaments.

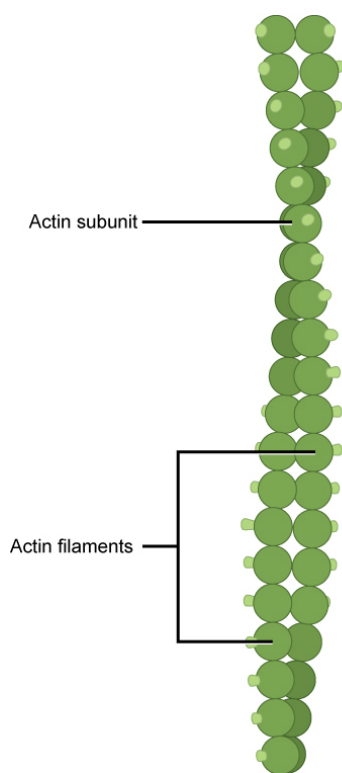


Figure 4.23 Two intertwined actin strands comprise microfilaments.

ATP powers actin to assemble its filamentous form, which serves as a track for the movement of a motor protein we call myosin. This enables actin to engage in cellular events requiring motion, such as cell division in eukaryotic cells and cytoplasmic streaming, which is the cell cytoplasm's circular movement in plant cells. Actin and myosin are plentiful in muscle cells. When your actin and myosin filaments slide past each other, your muscles contract.

Microfilaments also provide some rigidity and shape to the cell. They can depolymerize (disassemble) and reform quickly, thus enabling a cell to change its shape and move. White blood cells (your body's infection-fighting cells) make good use of this ability. They can move to an infection site and phagocytize the pathogen.

LINK TO LEARNING

To see an example of a white blood cell in action, watch a short time-lapse video of the cell capturing two bacteria. It engulfs one and then moves on to the other.

[Click to view content \(https://www.openstax.org/l/chasing_bacteria\)](https://www.openstax.org/l/chasing_bacteria)

Intermediate Filaments

Several strands of fibrous proteins that are wound together comprise intermediate filaments ([Figure 4.24](#)). Cytoskeleton elements get their name from the fact that their diameter, 8 to 10 nm, is between those of microfilaments and microtubules.

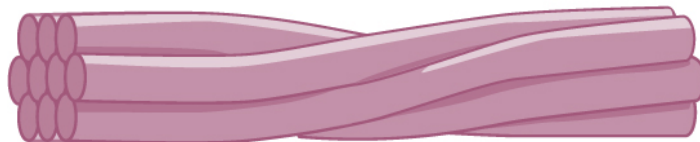


Figure 4.24 Intermediate filaments consist of several intertwined strands of fibrous proteins.

Intermediate filaments have no role in cell movement. Their function is purely structural. They bear tension, thus maintaining the cell's shape, and anchor the nucleus and other organelles in place. [Figure 4.22](#) shows how intermediate filaments create a supportive scaffolding inside the cell.

The intermediate filaments are the most diverse group of cytoskeletal elements. Several fibrous protein types are in the intermediate filaments. You are probably most familiar with keratin, the fibrous protein that strengthens your hair, nails, and the skin's epidermis.

Microtubules

As their name implies, microtubules are small hollow tubes. Polymerized dimers of α -tubulin and β -tubulin, two globular proteins, comprise the microtubule's walls (Figure 4.25). With a diameter of about 25 nm, **microtubules** are cytoskeletons' widest components. They help the cell resist compression, provide a track along which vesicles move through the cell, and pull replicated chromosomes to opposite ends of a dividing cell. Like microfilaments, microtubules can disassemble and reform quickly.

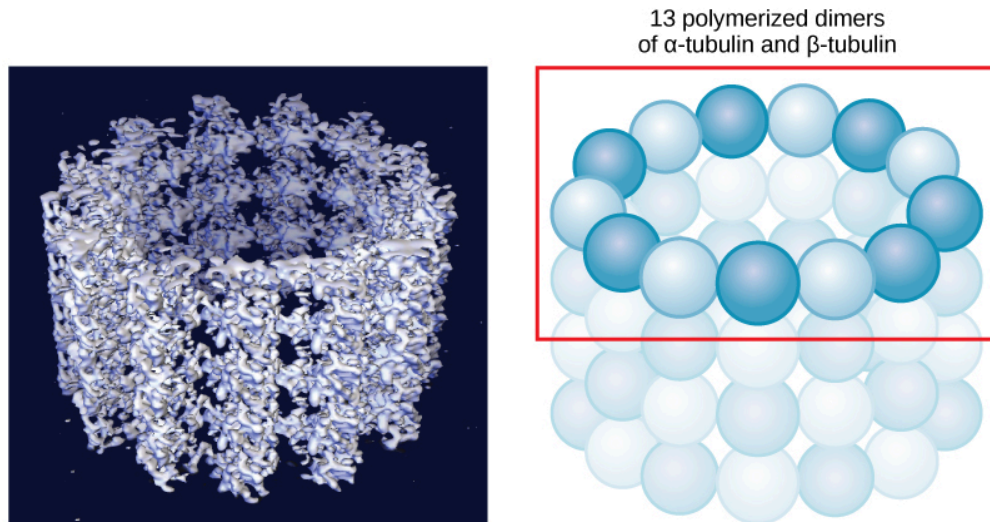


Figure 4.25 Microtubules are hollow. Their walls consist of 13 polymerized dimers of α -tubulin and β -tubulin (right image). The left image shows the tube's molecular structure.

Microtubules are also the structural elements of flagella, cilia, and centrioles (the latter are the centrosome's two perpendicular bodies). In animal cells, the centrosome is the microtubule-organizing center. In eukaryotic cells, flagella and cilia are quite different structurally from their counterparts in prokaryotes, as we discuss below.

Flagella and Cilia

The **flagella** (singular = flagellum) are long, hair-like structures that extend from the plasma membrane and enable an entire cell to move (for example, sperm, *Euglena*, and some prokaryotes). When present, the cell has just one flagellum or a few flagella. However, when **cilia** (singular = cilium) are present, many of them extend along the plasma membrane's entire surface. They are short, hair-like structures that move entire cells (such as paramecia) or substances along the cell's outer surface (for example, the cilia of cells lining the Fallopian tubes that move the ovum toward the uterus, or cilia lining the cells of the respiratory tract that trap particulate matter and move it toward your nostrils.)

Despite their differences in length and number, flagella and cilia share a common structural arrangement of microtubules called a "9 + 2 array." This is an appropriate name because a single flagellum or cilium is made of a ring of nine microtubule doublets, surrounding a single microtubule doublet in the center (Figure 4.26).

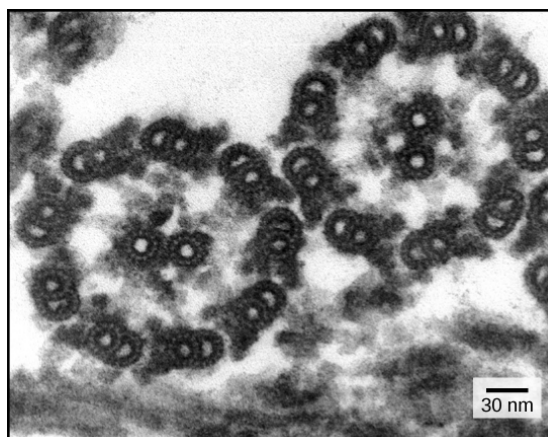


Figure 4.26 This transmission electron micrograph of two flagella shows the microtubules' 9 + 2 array: nine microtubule doublets surround a single microtubule doublet. (credit: modification of work by Dartmouth Electron Microscope Facility, Dartmouth College; scale-bar data from Matt Russell)

You have now completed a broad survey of prokaryotic and eukaryotic cell components. For a summary of cellular components in prokaryotic and eukaryotic cells, see [Table 4.1](#).

Components of Prokaryotic and Eukaryotic Cells

Cell Component	Function	Present in Prokaryotes?	Present in Animal Cells?	Present in Plant Cells?
Plasma membrane	Separates cell from external environment; controls passage of organic molecules, ions, water, oxygen, and wastes into and out of cell	Yes	Yes	Yes
Cytoplasm	Provides turgor pressure to plant cells as fluid inside the central vacuole; site of many metabolic reactions; medium in which organelles are found	Yes	Yes	Yes
Nucleolus	Darkened area within the nucleus where ribosomal subunits are synthesized.	No	Yes	Yes
Nucleus	Cell organelle that houses DNA and directs synthesis of ribosomes and proteins	No	Yes	Yes
Ribosomes	Protein synthesis	Yes	Yes	Yes
Mitochondria	ATP production/cellular respiration	No	Yes	Yes
Peroxisomes	Oxidize and thus break down fatty acids and amino acids, and detoxify poisons	No	Yes	Yes
Vesicles and vacuoles	Storage and transport; digestive function in plant cells	No	Yes	Yes

Table 4.1

Cell Component	Function	Present in Prokaryotes?	Present in Animal Cells?	Present in Plant Cells?
Centrosome	Unspecified role in cell division in animal cells; microtubule source in animal cells	No	Yes	No
Lysosomes	Digestion of macromolecules; recycling of worn-out organelles	No	Yes	Some
Cell wall	Protection, structural support, and maintenance of cell shape	Yes, primarily peptidoglycan	No	Yes, primarily cellulose
Chloroplasts	Photosynthesis	No	No	Yes
Endoplasmic reticulum	Modifies proteins and synthesizes lipids	No	Yes	Yes
Golgi apparatus	Modifies, sorts, tags, packages, and distributes lipids and proteins	No	Yes	Yes
Cytoskeleton	Maintains cell's shape, secures organelles in specific positions, allows cytoplasm and vesicles to move within cell, and enables unicellular organisms to move independently	Yes	Yes	Yes
Flagella	Cellular locomotion	Some	Some	No, except for some plant sperm cells
Cilia	Cellular locomotion, movement of particles along plasma membrane's extracellular surface, and filtration	Some	Some	No

Table 4.1

4.6 Connections between Cells and Cellular Activities

By the end of this section, you will be able to do the following:

- Describe the extracellular matrix
- List examples of the ways that plant cells and animal cells communicate with adjacent cells
- Summarize the roles of tight junctions, desmosomes, gap junctions, and plasmodesmata

You already know that tissue is a group of similar cells working together. As you might expect, if cells are to work together, they must communicate with each other, just as you need to communicate with others if you work on a group project. Let's take a look at how cells communicate with each other.

Extracellular Matrix of Animal Cells

While cells in most multicellular organisms release materials into the extracellular space, animal cells will be discussed as an example. The primary components of these materials are proteins, and the most abundant protein is collagen. Collagen fibers are interwoven with proteoglycans, which are carbohydrate-containing protein molecules. Collectively, we call these materials the **extracellular matrix** (Figure 4.27). Not only does the extracellular matrix hold the cells together to form a tissue, but it also